

# SPY×FAMILY

スパイファミリー

## ひが 光る! イラストアップトレーサー

Product images are for illustration purpose only.

### Items included

商品内容物



●Tracing Pad...1  
●描圖板本體...1



●Plain Paper...10  
●乾淨描圖紙...10

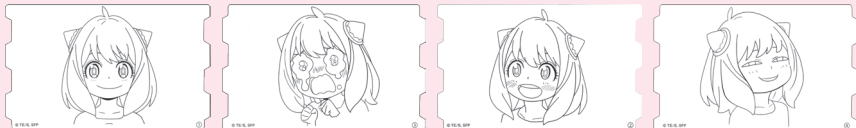


●Text Banner Tracing Sheets...2  
●文字圖稿...2



●Letter Paper...3  
●彩色邊框描圖紙...3

### ●Tracing Plates...21 ●造型設計圖稿...21



Anya Face Tracing Plates(Large)...4  
安妮亞表情圖稿(大)...4



Anya Face Tracing Plates(Wide)...1  
安妮亞表情圖稿(橫幅)...1



Character Tracing Plates(Small)...12  
角色圖稿(小)...12



Character in Full Length Tracing Plates...4  
角色全身圖稿...4

### Parts Names

配件名稱

Frame  
畫框

Switch  
電源開關

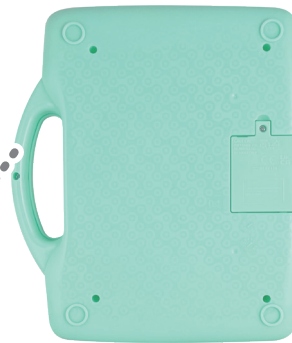
【Front】  
正面



Handle  
把手

Battery Cover  
電池蓋

【Back】  
背面



# Before starting...Insert batteries

開始繪圖前...請先裝入電池

Product images are for illustration purpose only.

- ※Battery attachment should be done by guardians.
- ※Ensure that the switch is turned off before inserting the batteries.
- ※Please replace the batteries with new ones when the LED light becomes weak, the color becomes strange, or the product malfunctions.

※電池的安裝應由監護人完成。  
※在插入電池之前，請確保開關處於關閉狀態。  
※當LED燈變得暗淡，顏色變異或產品出現故障時，請更換新電池。

AA Batteries ×3

3 AA batteries required. (Sold separately)  
請使用3號電池\*3(需額外購買)

- Using alkaline battery is recommended.
- 推薦使用鹼性電池

**1 Remove the battery cover.**  
Please use plus or minus screwdriver to loosen the screw in anticlockwise direction, to remove the battery cover at the back.

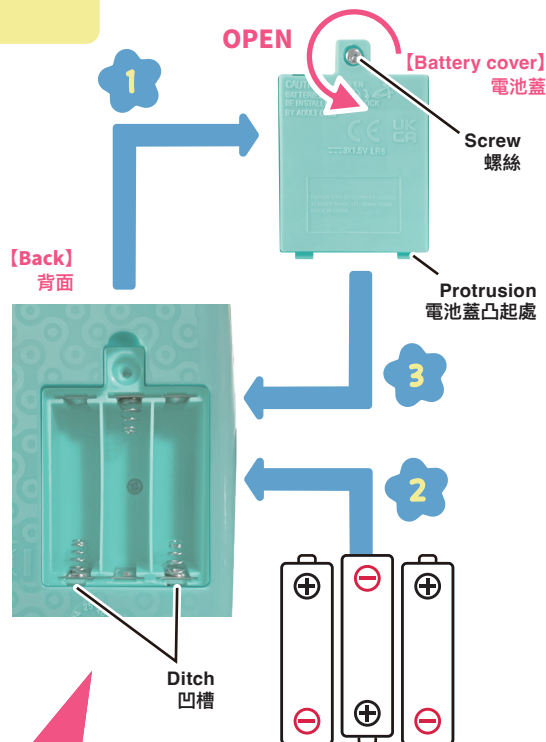
取下電池蓋。  
請使用螺絲起子，逆時針方向鬆開螺絲，以取下背面的電池蓋。

**2 Insert batteries.**  
Please insert 3 AA batteries in the correct +-(plus minus) direction according to the image.

插入電池。  
請根據圖片中的正負極方向，將3顆AA電池正確插入。

**3 Place the battery cover.**  
After inserting the batteries, please insert the protrusion of the battery cover into the ditch and close the battery cover by tightening the screw in clockwise direction.

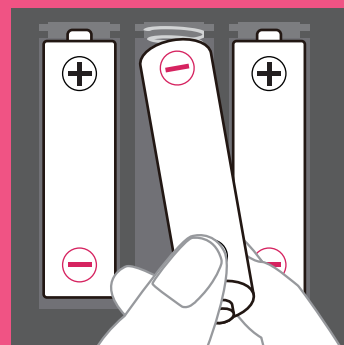
安裝電池蓋。  
在插入電池後，請將電池蓋的凸起處插入凹槽，然後用順時針方向緊固螺絲來關上電池蓋。



## CAUTION!

Please insert the AA alkaline batteries from the minus side, with the correct polarity(plus and minus). Inserting batteries in the wrong direction may lead to overheating due to damage of the battery coating. Do not mix old and new batteries together. Please ensure the spring contact minus side of the battery.

請將 AA 鹼性電池從負極一側插入，確保正負極極性正確。  
如果電池外層損壞，將電池插入錯誤方向可能導致過熱。  
請不要將舊電池和新電池混合使用。請確保彈簧接觸端與電池的負極相接觸。



**Please note the following while using batteries.**  
使用電池時請注意以下事項

- ※Please use unused new batteries. Do not mix different brands or types of batteries together.
- ※Do not use batteries with damaged coating due to the risk of overheating.
- ※Always turn off the switch after playing. Please remove the batteries when the toy is not used for a long period.
- ※請使用全新電池。不要將不同品牌或型號的電池混合使用。
- ※不要使用外層損壞的電池，以免過熱風險。
- ※在遊玩後，請關閉開關。當長時間不使用玩具時，請取出電池。

# How to play

玩法說明

Product images are for illustration purpose only.

## Prepare pencils and color pencils!

請準備鉛筆或是色鉛筆!

1

① Open the frame.

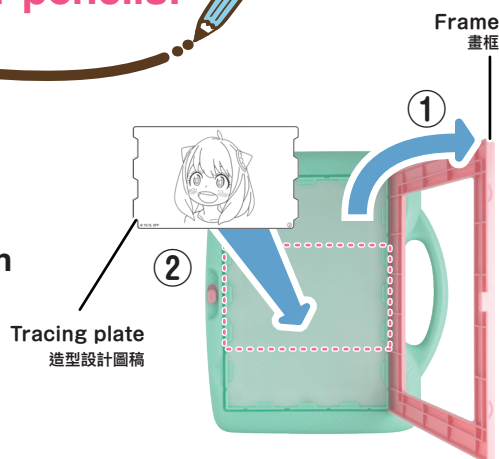
② Set tracing sheet on the tracing pad.

※Please set the tracing plate with the illustration facing the top and make sure the bump fits in.

① 打開畫框。

② 在畫板上放置設計圖稿。

※請確保將畫板的插圖朝上，並確保凸起部位吻合。



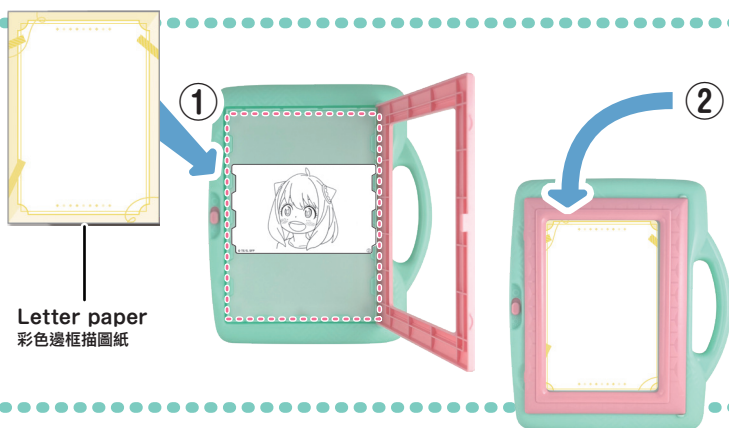
2

① Set letter paper or plain paper.

② Close the frame.

① 放置乾淨或彩色邊框描圖紙。

② 關上畫框。



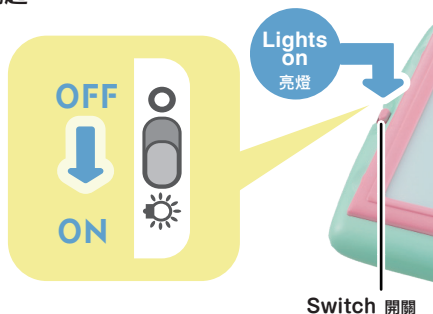
3

① Turn on the switch

→The tracing pad will light up.

① 打開開關。

→畫板將亮起。



② After lighting up, trace the lines.

② 亮燈後，按照線條描圖。



4

Finish with coloring!

Let's draw more!

完成上色! 讓我們一起再多畫一點!





# Arrange 1

美化加工1

Product images are for illustration purpose only.

After getting used to drawing,  
let's make some arrangements!

越來越熟練之後，讓我們開始進行一些加工吧！

Let's try writing a letter by using the text banner tracing sheets!!

※Cut out the part that you want to use.

試著使用描繪文字圖稿加入一些文字吧！  
請剪下你想使用的部分。



Set text banner tracing sheets while setting other tracing plate!

※You can use the text banner tracing sheets above or under other tracing plates.

在設置造型設計圖稿的同時，也放上文字圖稿吧！  
※你可以將文字圖稿放在造型設計圖稿的上方或下方。



## Sample works

範例作品



## Arrange 2

美化加工2

Product images are for illustration purpose only.

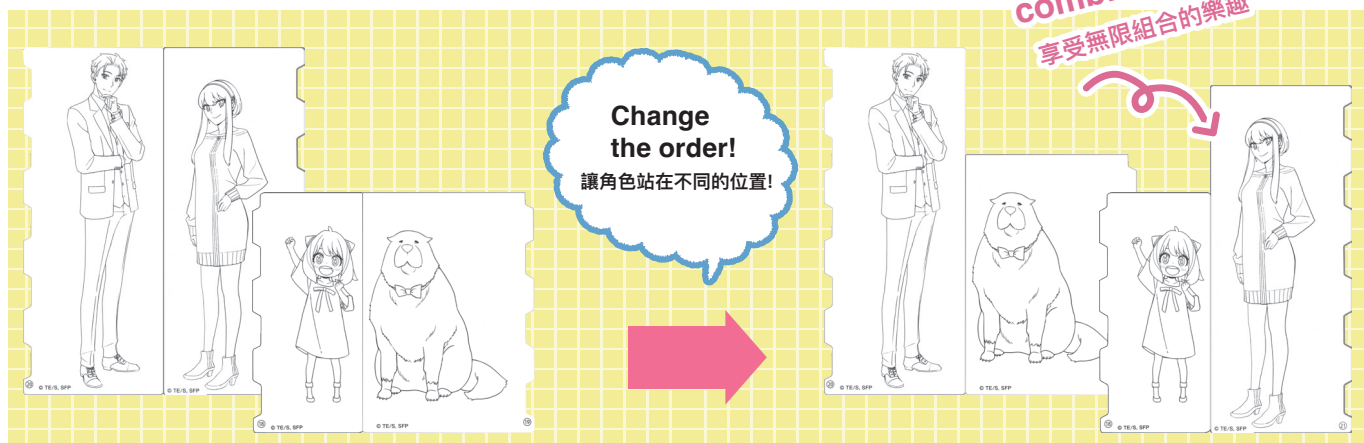
### Use different kinds of tracing plates to draw!

使用多種不同的造型設計圖稿來描繪!

#### Use Character in Full Length Tracing Plates to rearrange!

重新排列全身的角色造型圖稿組合出新的作品!

Enjoy different combinations  
享受無限組合的樂趣



### Step Up!

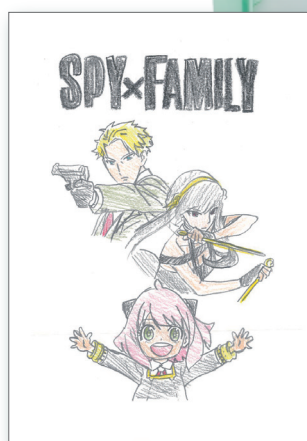
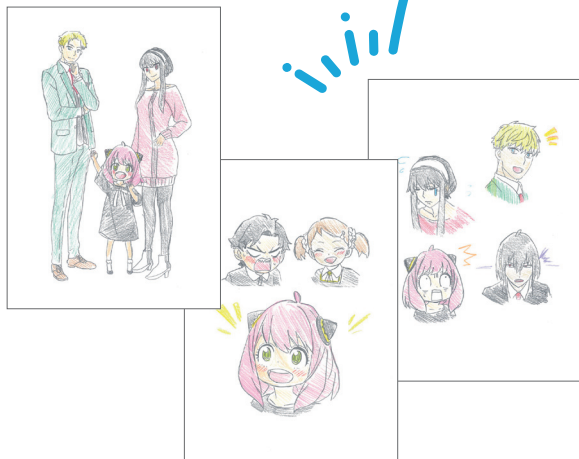
進階挑戰!

Draw your own illustration by setting different tracing plates!

※You can set the piled up tracing plates together.

透過設置不同的造型設計圖稿，繪製你的專屬作品吧!

※可以將圖稿堆疊做擺放。



You can draw the illustration printed on the package!

還可以畫出包裝上印刷的插圖喔!